



# How to Assemble the Salmon Cycle Necklaces

For use with *Salmon Life Cycle: A Role-Play Story*

## Materials needed

### For each necklace:

- Template (salmon wheel and salmon wheel holder)
- Card stock
- Brass fastener
- Double lanyard

### For assembly:

- Scissors
- Thumbtack
- Cardboard (for backing when using thumbtack)
- Hole punch



## Instructions

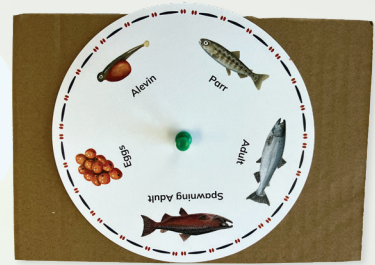
### STEP 1: Print, Fold, and Cut

1. Print the templates on card stock for each necklace.
2. Cut out the salmon wheel. (For a more precisely cut wheel, consider having the wheel die-cut.)
3. Fold the salmon wheel holder sheet in half.
4. Cut out the notch at the top and trim off the white border at the top so none is visible.



### STEP 2: Make the Holes

5. Place the salmon wheel on the piece of cardboard. Using a thumbtack, make a hole through the middle where marked.
6. Do the same with the salmon wheel holder: place it on the cardboard and use the thumbtack to make a hole through the front and back.



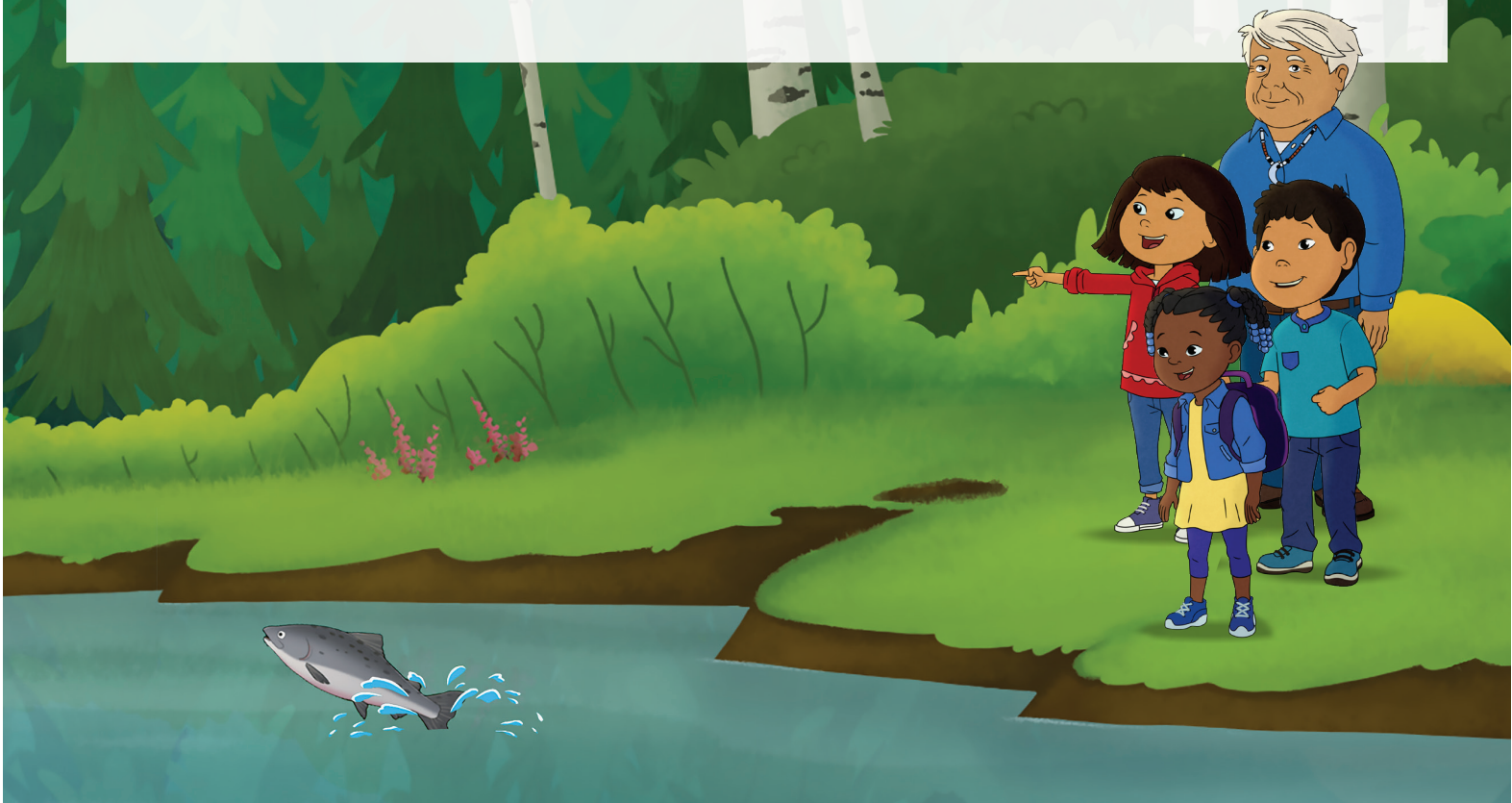
### STEP 3: Assemble the Necklace

7. Do a dry assembly first.
  - Insert the salmon wheel inside the salmon wheel holder.
  - Align the holes by pushing the thumbtack through the front, the circle, and the back.
  - Check that you can spin the wheel.
8. Insert a brass fastener through the aligned holes on the salmon wheel holder. Open the fastener horizontally on the back, so that the fastener doesn't block the space where kids will write their names.

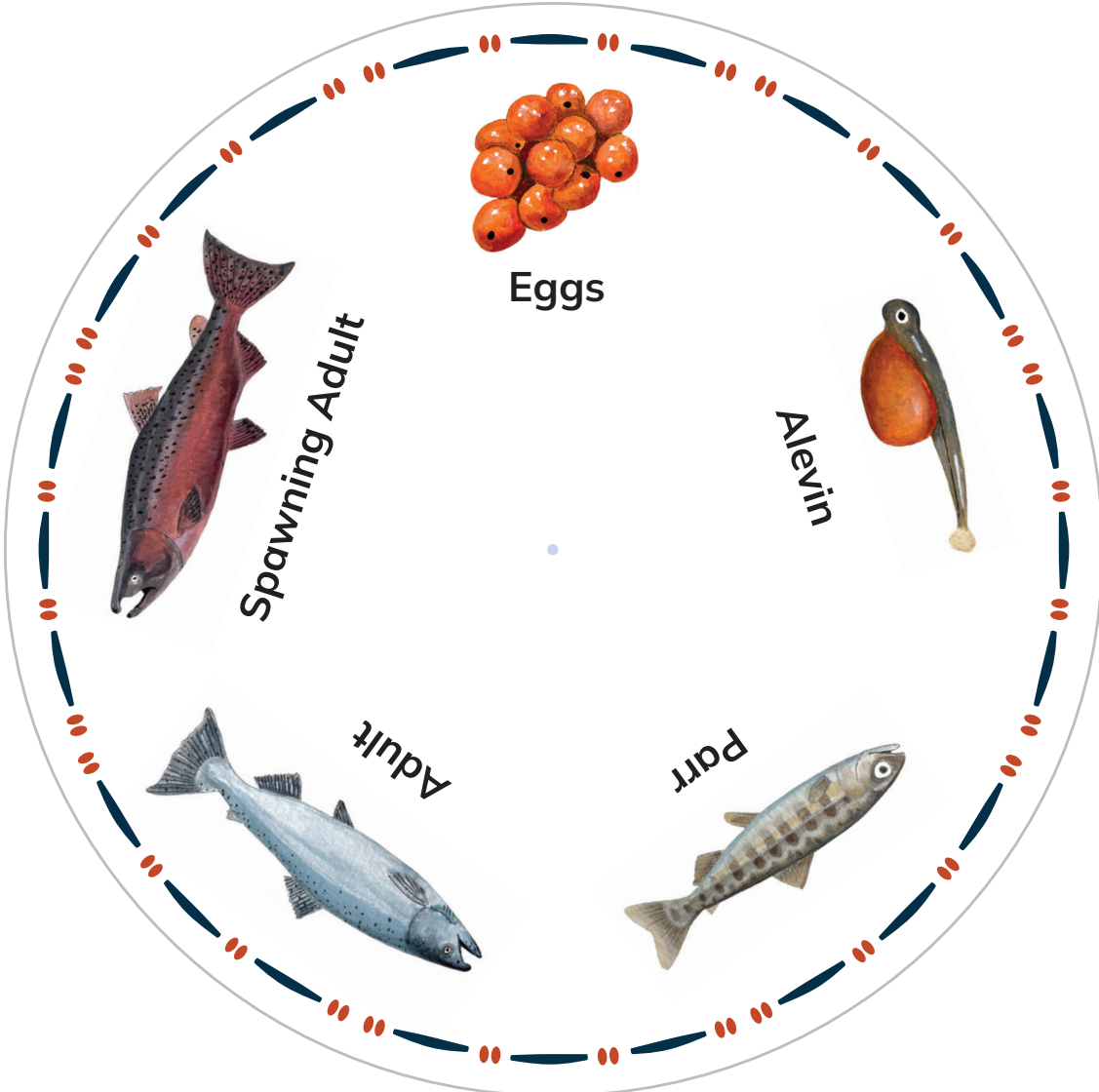


### STEP 4: Add the Lanyard

9. Use the hole punch to make two holes at the top of the salmon wheel holder where marked.
10. Attach the double lanyard to each hole.







The header features a light blue background with a white trapezoidal shape at the top. A small white dot is centered above a decorative oval frame. The frame has a red border and a dashed blue outer line with small red and blue dots. The title "Salmon Life Cycle" is written in a bold, dark blue font. Below the title is a horizontal band of nature illustrations: white flowers on the left, green grass and rocks in the center, and green leaves with purple berries on the right. The bottom of the page is a solid light blue area with a dotted line and the word "Name:" on the right side.

# Salmon Life Cycle

.....  
Name: